

# 2019



## Annual Report



## Hope for the Future



# Hope for the Future



[www.reachoutmbuya.org](http://www.reachoutmbuya.org)

# Table of Content

Message from the Chairman Board of Directors.....	5
Message from the Executive Director.....	6
Introduction.....	7
<b>KEY MILESTONES.....</b>	<b>8</b>
1.1.1. To scale up and improve the quality of services to PLWHA in order to prolong their quality of life by addressing and mitigating the health effects of HIV and AIDS (Treatment and Care). ....	8
1.1.2. To reduce the spread of HIV, and the occurrence of new infections of HIV by 30% in the catchment area by 2022.....	16
1.1.3 To provide social and economic support to PLWHA and other needy persons infected by HIV and AIDS.....	21
1.1.4 Strengthening Management and Support Systems.....	24
1.1.5. Improve the sustainability of ROM.....	25
Other projects:.....	26

# Acronyms

AIDS	- Acquired Immune Deficiency Syndrome
ART	- Anti-Retroviral Therapy
ARV	- Anti- Retroviral
CAFU	- Child AID Foundation Uganda
CATTS	- Community ART and TB Treatment Supporters
CRS	- Catholic Relief Services
CBD	- Community-Based ART Delivery
CDDP	- Community Drug Distribution Points
CDC	- Center for Disease Control
COFE	- Child Optimized Financial Education
DREAMS	- The Determined, Resilient, Empowered, AIDS free, Mentored and Safe
DSDM	- Differentiated Service Delivery Model
e- CDDP App	- Electronic Based Community Drug Distribution Point Application
eMTCT	- Elimination of Mother to Child Transmission of HIV
GBV	- Gender Based Violence
HES	- Household Economic Strengthening
HIV	- Human Immunodeficiency Virus
IDI	- Infectious Diseases Institute
IGAs	- Income Generating Activities
KP	- Key Populations
LTFU	- Lost to Follow-up
NGO	- Non-Governmental Organization
MARPS	- Most at Risk Populations
MoH	- Ministry of Health
OVC	- Orphans and Vulnerable Children
PEPFAR	- President's Emergency Plan for Aids Relief
PLWHA	- People Living With HIV/AIDS
PMTCT	- Prevention of Mother to Child Transmission
P.P	- Priority Populations
ROM	- Reach Out Mbuya HIV/AIDS Initiative
RTI	- Research Triangle Institute International
SLF	- Stephen Lewis Foundation
SILC	- Savings and Internal Lending Communities
SOCY	- Sustainable Outcomes for Children and Youth
TB	- Tuberculosis
USAID	- United States Agency for International Development
VSLA	- Village Saving and Loans Association

## Message from the Chairman Board of Directors



2019 has been a remarkable year for Reach-Out Mbuya Parish HIV/AIDS Initiative (ROM). The organisation has received great support both locally and internationally from friends and well-wishers.

Service to others is ROM's calling. 1Peter 4:10 calls upon us all to be good managers of God's different gifts and to use them for the good of others. We have received an opportunity to serve God's people in Reach Out Mbuya both spiritually and physically through health and social support. From Children to grandmothers we have witnessed God's love and mercy to mankind. It is gratifying to see how helping others to hope for better situations and collaborations with both the supporters and the supported can build resilient communities.

On behalf of the Board of Directors of Reach-Out Mbuya, we thank all the benefactors that have continued to believe in our mission and have entrusted us to oversee this wonderful work. We are confident about the direction Reach-Out Mbuya Parish HIV/AIDS Initiative is taking. As we continue strengthening the governance of the institution, we commit ourselves to reaching out with love to our poorest and most abandoned brothers and sisters.

We appreciate the staff for their dedication, innovative ideas, and encourage them to meditate on new possibilities of achieving ROM's set goals.

**Rev. Fr. Anthony Kimbowa Kibira mcccj**

Chairman Board of Directors





## Message from the Executive Director

2019 is the year Reach Out Mbuya Parish HIV/AIDS Initiative (ROM) marked 15 years of Antiretroviral therapy (ART) care support to our clients. Privileged that our client was the first beneficiary in Uganda of the lifesaving anti-retroviral drugs from the U.S President's Emergency Plan for Aids Relief (PEPFAR) program, it has been a wonderful year celebrating the hope for the future that many of our beneficiaries kept and have lived to celebrate today.

At 15 we have achieved many successes much as every other day new challenges in the scourge management surface keeping us on the edge as we search for lasting solutions.

We have undergone lots of physical changes, conceptualized our growth and learning outcomes while grounding the operation for further deepening and scaling. Anchored in our holistic approach, we are on track to realize a community free of the spread and improved quality of life for the infected and affected. We believe HIV/AIDS Management goes beyond medical care. Science, social, economic plus spiritual support all go hand in hand in addressing the same at ROM.

As the world grapples with the challenge of adolescents' viral suppression levels, we are equally getting more attentive to those aging with HIV as we proactively monitor complications associated with long-term infection of HIV. We celebrate the almost wiped out Mother to Child Transmission among our clients though not off our guard completely.

We are strengthening our research capability to mine all the data we have collected over the years as we equally study our approach vis a vis desired impact. HIV is still a threat to our communities.

Lifetime ART is not a walk in the park either. Adherence, behavioural change, elimination of stigma, disclosure among discordant partners, non discriminative but supportive communities, proper nutrition and financial capability are all important attributes to live a dignified life. It's everyone's responsibility, young and old to work together to give each other enabling environments to manage the same.

We cannot thank our benefactors enough for standing with us always and enabling us to continue pursuing our vision while at the same time giving thousands of the infected and affected a chance to live both comfortably and productively.

It takes a committed and talented team to deliver the funders and trustees expectations, I salute the ROM Team that works tirelessly to achieve the ROM Vision. One brick at a time, we are surely building the cathedral that the ROM founders envisioned. A luta continua.

**Josephine Kaleebi**  
Executive Director

# INTRODUCTION

## WHO WE ARE:

Reach Out Mbuya (ROM) is a Faith-based Non-Governmental Organization that was started to address the further spread of HIV/AIDS in slum areas of Nakawa Division to begin with but later scaled up operations to other needy regions. Since 2001, ROM has served over 15,000 clients with comprehensive HIV/AIDS management and associated support interventions. Operating in Kampala, Wakiso, Luwero, Nakaseke, Mubende and Kassanda districts, ROM's unique holistic approach cares for the body, mind, family, and community needs of the beneficiaries, restoring hope to the hopeless, good health to the sick and dignified living to the affected.



### VISION

A community free of the spread of HIV where those persons already infected and affected by HIV and AIDS are living positively with an improved quality of life.



### MISSION

We aim to curb the further spread of HIV infection among the less -privileged members of society and enable those already living with HIV and AIDS to live a responsible and dignified life.

### Core Values

#### Teamwork



#### Client Focus



#### Professionalism and Integrity



#### Innovation & Respect for human life



## Holistic Model of change:



Our programming is driven by a holistic model that not only provides direct medical care for People Living with HIV (PLHIV) through providing good health of the body, fostering positive mindsets, empowering the family and community of the affected to offer dignified living environments. Our approach empowers beneficiaries and their families in all aspects of life, promoting resilience amidst life challenges. A community-based and peer centred model improves service delivery through the engagement of community grassroots structures as champions of the desired change.

## KEY MILESTONES

### Objective

- 1.1.1. To scale up and improve the quality of services to PLWHA in order to prolong their quality of life by addressing and mitigating the health effects of HIV and AIDS (Treatment and Care).**

### Medical Care.

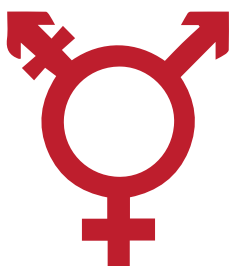


Medical services offered in the year involved HIV testing and management, counselling, tuberculosis identification, tracing and treatment, other HIV opportunistic infection treatment and general primary health care for the elderly and OVCs in care.

These services were provided at our sites of Mbuya, Kinawataka, Banda, Kasaala in Luwero plus Kassanda in Mubende district specifically for the Key Populations. ROM also runs the Mobile Outreach services targeting Key Populations and Priority Populations that include; the fisher mongers, sex workers, truckers, people who inject drugs and others. Specifically, targeted clinics are run like The ROM Knowledge Room at Nakawa for the truckers, the ROM Wellness Centre at PortBell Luzira for the fisher folks, the Men's evening clinic at Kinawataka every Wednesday 5pm. to 10 pm., the Moonlight Clinics targeting sex workers and more.

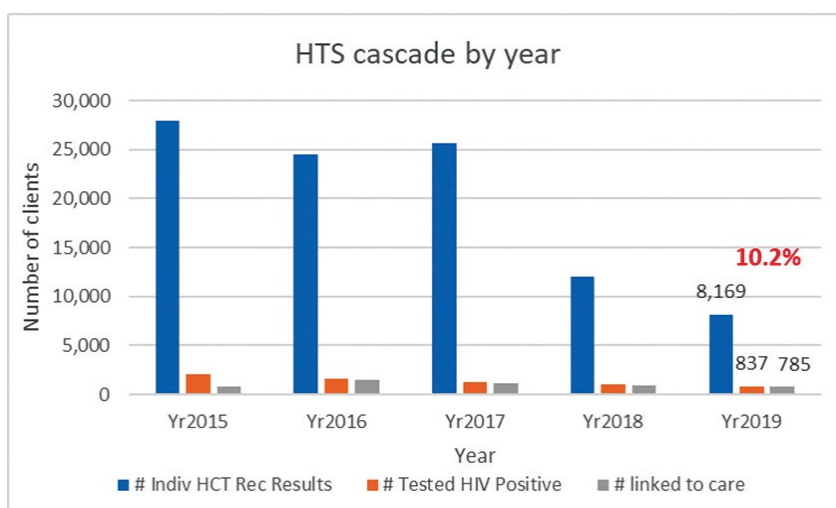


## HIV Testing and Counselling



Fast-tracking the UNAIDS 95;95;95 HIV targets of ending the HIV epidemic, ROM has now moved into targeted testing for higher yields of positive cases to fast-track linkage to care and adherence to treatment. As we strengthen the prevention messages to the general public and encourage testing by all, more effort has been put into testing the Most At Risk Populations;

**8,169** people were tested for HIV in 2019 **10.2% (837)** tested HIV positive which is way above the national HIV prevalence (**6%**). **4,445** men were tested for HIV **7.7%** tested HIV positive **3,724** women were tested for HIV **13.3%** tested HIV positive. **94%** of HIV positive clients were linked to care.



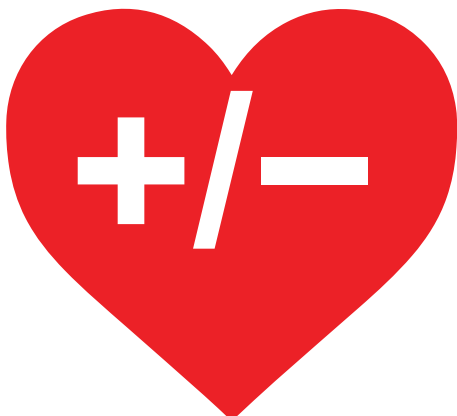
The table shows a reduction in HCT in 2018 and 2019 compared to the years before because of the targeted testing. The prevalence in 2019 was **10.2%** which is above the National prevalence of **6%**.

**Figure 1:** Number of clients accessing HCT services

Of the **8,169** people tested (**845**) were MARPs (KPs and PPs) who accessed HCT contributing **10%** of the total tested **55** were HIV positive contributing 7.0 % of the total positives identified.

*ROM reached more HIV positives contributing to the first 95% of the HIV 95-95- 95 target set by UNAIDS.*

## HIV Discordancy



Discordant couples represent a critical most at-risk group given that the HIV negative partner is at a high risk of contracting HIV. Uganda registered 79355 discordant couples in the last five years (Ministry of Health (MoH), District Health Information System 3). As of 2019, ROM has registered and taken care of 276 discordant couples.

2019, discordant modular trainings were held with 39 people attending and 14 negative partners retested all as HIV negative.

ROM holds continuous meetings with the couples to ensure they do not have misunderstandings which may arise from knowing their partner's HIV positive status. ROM also ensures no cases of Gender Based Violence, stigma and discrimination is witnessed among the couples.

## Discordant Couple's Story

**Samuel** (not real names) was born with HIV. I was enrolled by ROM at a young age, I was always in and out of hospital due to my poor health. I also once lost hope of ever growing into an adult and start a family of my own since I thought no one will ever take me for a husband because of my HIV status. With counselling and support from the ROM team and adolescents peer support meetings, I developed self-love and hope that enabled me think positively.

I got a girlfriend and at the start of the relationship, I feared to disclose my status to her thinking she would leave me. Since we grew up in the same community people used to tell her how her boyfriend had HIV from childhood. It was difficult to disclose to her my HIV status. I looked for the right words and right time to come clean to her. When the right time came and I disclosed to her. I was relieved and surprised that she did not leave me. We visited ROM and had a good session with a Counsellor who encouraged her to test too. Her results were negative. She continued to support me more than ever. We have been blessed with a baby girl increasing our happiness as parents now.

## Alcoholism

According to estimates by the World Health Organization more than 3 million people died as a result of harmful use of alcohol in 2016. This represents 1 in 20 deaths. Overall, the harmful use of alcohol causes more than 5% of the global disease burden. The level of alcohol use among adults in Uganda is high, and 9.8% of the adult population has an alcohol-use-related disorder.

ROM serving slum communities mainly, alcoholism is one of the challenges affecting ART adherence and viral suppression for many of ROM's clients. Forgetting to take their medication, increase in domestic violence, missing clinic appointments and poor nutrition are common challenges in managing the viral burden of the alcoholics. Alcohol Anonymous Club to address the same was started to help clients with the problem and including those with drug addiction.

This year, we carried out home visits in clients' households with alcohol problem, Clients who accepted to be rehabilitated were taken to Butabika for medical support.

	<b>FEMALE</b>	<b>MALE</b>	<b>TOTAL</b>
<b>ACTIVE CLIENTS</b>	<b>230</b>	<b>176</b>	<b>406</b>
<b>CLIENTS WERE HOME VISITED</b>	<b>16</b>	<b>19</b>	<b>31</b>
<b>CLIENT WHO WENT TO BUTABIKA FOR REHABILITATION</b>	<b>6</b>	<b>6</b>	<b>12</b>
<b>CLIENTS WHO STOPPED SUBSTANCE ABUSE</b>	<b>10</b>	<b>4</b>	<b>14</b>
<b>RELAPSES</b>	<b>7</b>	<b>3</b>	<b>10</b>
<b>CLIENTS WHO ATTENDED AA MEETINGS</b>	<b>51</b>	<b>44</b>	<b>95</b>



*Quarterly alcoholic meeting in Acholi Quarters and Kinawataka site.*



## Mobile Van Services



The ROM Mobile Services target the hard to link and the Most At-Risk Populations (MARPS). To access them and link them into care, a fully equipped and staffed mobile van designs clinics and activities in line with the life styles and interests of the targeted groups and follows them to where they are commonly stationed. The Mobile Outreach operations usually support the ROM Wellness Center at Luzira Port Bell, the Knowledge Room at Nakawa Kinawataka, Wabiduuku in Kiwatule, Naguru Go-down, Kireka, Kimwanyi, Malcom Medical Center and many more other places as the target groups are very mobile in their nature of working and living.

HIV Testing, counselling, linkage to care, ART management and treatment of STIs and HIV opportunistic infections plus prevention messaging are part of the services offered by the Mobile Van.

Mobile van tested **1051** KP and PP clients in 2019 compared to **1850** KP and PP clients in 2018. **90** KP and PP clients tested positive registering an HIV prevalence of **8.6%** in 2019 compared to **165** clients tested HIV positive in 2018 registering a prevalence of **8.9%** the two prevalence rates are way above the national prevalence of **6%**. **122** outreaches clinics were held in the different communities all together.



*Nutrition support being offered during mobile van outreach in Kimwanyi*

## Male Engagement

Historically, studies have proved that in Africa, men are less likely than women to know their HIV status, engage in HIV care in a timely manner, stay in care and maintain an undetectable level of virus in the blood. For long, linkage to care has been mainly embraced by women and children with very few men accessing HIV care yet men play a very big role in the prevention and treatment, but over the years, implementing partners have targeted men in the prevention and treatment of HIV. ROM has crafted various interventions aimed at male behaviour change and engagements have been implemented. Key of which is the special Men's Clinic held every Wednesday in the evening to offer them private attention. At ROM, through the men's clinic clients receive care during the weekly evening program like;

The clinic in 2019 reached **454** clients with HCT services of these **46** tested HIV positive and were all linked to care.

Total number of consultations were **681**, of these **66** tested positive for sexually transmitted diseases and were fully treated.

**80** were counselled for other psychosocial issues

**Operation Gideon Program** targets men places at drinking places, betting halls and recreation places; offering HIV testing and counselling, screening them for Sexually Transmitted Infection and Tuberculosis and for those found positive they are linked to treatment and care program.

**Special Moon light outreaches** also target a category of men for example; the drug users.

**By 2030**

**95-95-95**  
Treatment

**200 000**  
New infections among adults

**ZERO**  
Discrimination

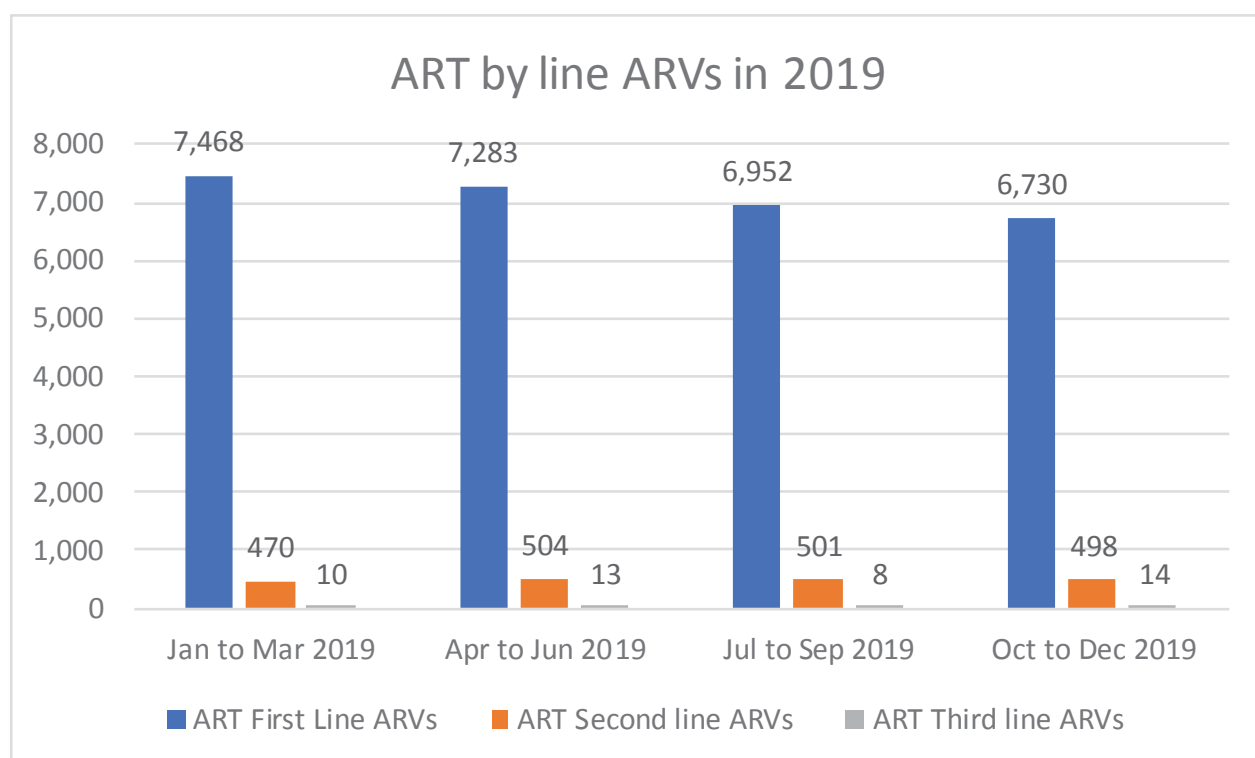


## Clients in Care and on ART



ROM continues to monitor adherence at both facility and their homes through the Community ART and TB Treatment Supporters (CATTS).

These are linked to clients in their neighbourhood and engage in tracking patients who have not appeared at the clinic for at least three months, those lost to follow-up (LTFU) these can be brought back to care through contact tracing and home visits.



*The graph shows patients adhered to medication in 2019.*

**7,242** clients were active on ART in 2019 at the ROM sites  
**4.5% (325)** ART clients were children aged 15 years old and below.  
**9.2%** Adolescents  
**65%** active clients were women



**92.9% (6730)** clients on first regimen **6.9% (498)** clients on second regimen while **0.2% (14)** clients were on third regimen.



**94.3%** of the **7242** clients have good adherence.  
**816** of the active clients are MARPs (KPs and PPs)







## Meet Timothy:

**Peer supporter at ROM shares his life story**

*Timothy Kaboggoza aged 19 is under ROM's care. A young person living with HIV. Timothy loves music and earns his living as a tailor.*

I was born with the HIV virus. I got to know about my status when I was 8 years. At that time, I had already started taking HIV medication. I later started engaging in activities at ROM like the friend's forum, sports gala, adolescent camps and the young adult's forum. I was enrolled in the ROM OVC program and later joined the tailoring training as part of the organization OVC vocational skilling. This I didn't like at first. I trained for six months and later on because of my good performance, I was enrolled into the ROM workshop at Banda site, where I worked for a year and I was considered for a start-up support which was in form of a sewing machine. I became self-employed, working from home and have worked for one year now. As a peer supporter at ROM, I support fellow young people to adhere well to their treatment and also cope with the situation. This platform has given me confidence and the ability to change the lives of fellow peers. Recently, I had a trip to Kenya as an advocate from youth trials board research under The Makerere University - Johns Hopkins University Research.

On return, I had to contest for the Y+ beauty pageant 2019. Two children and adolescent caregivers at ROM that have since passed on had wanted me to contest previously, and I participated in their honor. Uncle Eric Ezati & Uncle Moses Okurut as all of us children referred to them would be very proud to see me today as the Mr. Y+ Central Region. At the grand finale, I emerged first runner up, Mr. photogenic and most talented contestant. Thanks to the Stephen Lewis Foundation I have been able to reach where I am today. I am grateful to ROM and all our beloved donors, for the medication we receive and all the other support. It is through this support that am able to live a dignified life.

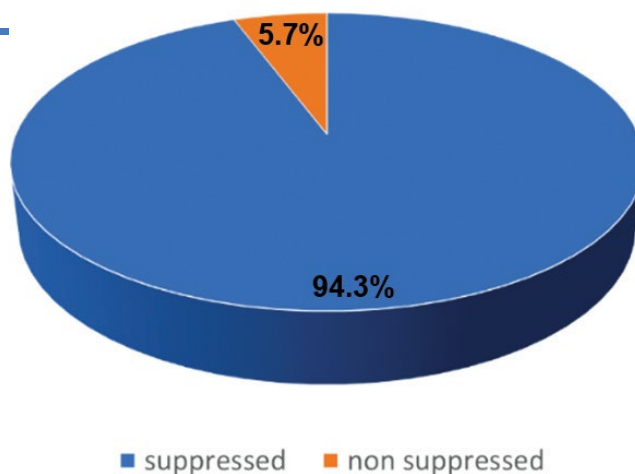
## 1.1.2. To reduce the spread of HIV, and the occurrence of new infections of HIV by 30% in the catchment area by 2022

In order to achieve the 30% reduction in the spread of HIV and occurrence of new infections as by the Strategic Plan ROM has put in place the following services; Continuous Health Education, risk reduction counselling and psycho-therapy alcohol /drug harm reduction stigma and discrimination capacity building.

### Viral Load Suppression

In order to achieve viral load suppression ROM intensifies viral load monitoring to improve the clinical management of HIV as an urgent public health priority. As of 2019, 94.3% of ROM clients successfully suppressed the viral load to be undetectable which is below 1000ml and therefore letting people with HIV LIVE long and healthy lives unable to pass on HIV to their sexual partners.

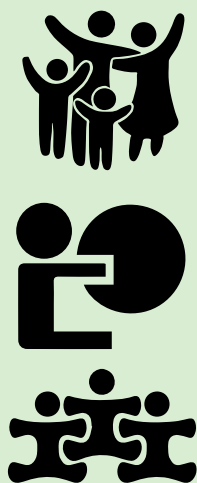
Viral Load Suppression Rate at ROM



### Psychosocial Support

#### Play Therapy

During play therapy, ROM is able to identify issues faced by children at home, school or in the community and this is expressed in the way children play and through using the different play materials such as; toys, worksheets, drawing and shading, writing, indoor games and movies while others children are able to express themselves freely and verbally. The play therapy approach has enabled easy identification of cases of violence, GBV, and vulnerabilities in children's households and immediate responses have been made by the ROM staff



*Children enjoying play at the ROM play center in Mbuya.*

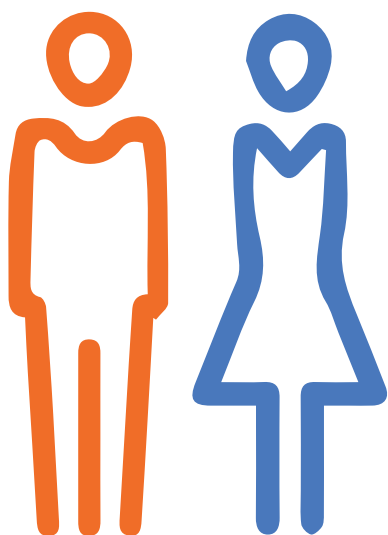
## Young Mothers

In 2019 ROM reached out to **135** young mothers in the community with sensitization sessions, SRHR messages and general life skills. **120** young mothers were enrolled in skilling / vocational training. 6 groups were established with business enterprises ranging from tailoring, catering, piggery and herbal medicine sell and were given startup capital by ROM.



*Some of the young mothers under Apprenticeship Training 2019-2020.*

## Adolescent Clinics:



ROM engages with adolescent through the adolescent clinics. These specifically target adolescents 12-18 years of age and are conducted every month. Youth friendly services are provided as the adolescents' access care, but also involve the peer to peer model of service where the adolescent peers support their fellows. The peers support in registering, weighing, pill counting and also carry out health education, supported by ROM staff. Adolescent friendly services such as group discussions, use of play, movies and indoor games make the clinic interesting and lively for them that they feel like staying longer at the facility.

## Friend's Forum

ROM has utilized these peer support groups for children living with HIV and adolescents who know their status. During these meetings, group discussions are held on stigma, disclosure, sexuality, risky behaviours among young people, experience sharing, positive living and adherence. These have been an avenue for development of self-esteem and addressing self- stigma among these children.



*Children gathered for a talk at the Banda site.*



## Elimination of Mother to Child Transmission of HIV



In 2019, ROM offered a comprehensive Prevention of Mother-to-Child Transmission (PMTCT) program that brings together prevention and counselling, medical treatment, and follow-up of pregnant and lactating mothers. In 2019, 90% of PMTCT mothers had suppressed viral load due to the PMTCT counselling offered at the facility, home visits by mother to mother peers and CATTS.

Early identification of pregnant women in the program has led to good outcome. Mothers are followed regularly by Mother to mother community supporters. Nutrition supplements offered have enabled our PMTCT mothers to support their children growth and development in the infancy stage. Positive mothers have lived to deliver negative babies during their stay in Reach Out care despite the challenges encountered in the process like poor adherence due to vomiting in pregnancy.

ROM also carries out PMTCT follow ups on pregnancy and lactating mother up to 18months this is done by a team of clinicians, mothers to mother peers and CATTS.

The EMTCT team has noticed that there is low male partner involvement in PMTCT strategies. Men claim to be working and getting information from other media like Newspapers etc.

### **Susan (not real name) Is a ROM client since 2006.**

She joined the program very ill; her husband had abandoned her to marry two wives. Living her alone in the house, it's her neighbour that supported her and brought her to ROM for treatment. Testing positive as part of the first treatment checks, she was started on ARVs immediately.

In two weeks her **CD4 = 249**

"I had no job. ROM enrolled me on a food support program for a year then when I became strong, I started working. I sold sugarcane and pancakes for a living. Later I went to the city abattoir to sell offals. I met my current husband there doing this job and started staying with him. When later I got pregnant and was enrolled for PMTCT, I got counselled on good adherence, importance of Viral Load Suppression, mode of HIV transmission, Infant feeding option and was advised to bring my partner for an HIV test. It was not easy. The Counsellor came home and met my husband, counselled him and later accepted to come for the HIV test. He tested negative in 2012.

I thank ROM staff for the support especially the care, support and advice in nutrition and other interventions for my home.

***I have delivered four children in the EMTCT program, all negative.***

***My children are aged 8,6,1 and the last one is 6 months.***

## Differentiated Service Delivery Model (DSDM)

*Differentiated Service Delivery Model (DSDM) provides client-centred care. The model simplifies and adapts HIV services across the cascade.*

ROM applies this client-centred approach to simplify the distribution and adaption to HIV services to those that need them. As efforts are accelerated towards HIV/AIDS epidemic control in Uganda, Reach Out Mbuya and RICE-WN looked at generating efficiency, sustainability and community ownership through integrating approaches to HIV service delivery, ROM adapted a Community-Based ART Delivery (CBAD) Model in March 2017 which enabled PLHIV( who are enrolled as clients at ROM and are clinically stable) to obtain their antiretroviral (ARV) refills at the Community Drug Distribution Points (CDDP) chosen by the clients within their communities.

The project aimed at Improving Quality of Care and Management of HIV/AIDS services through Electronic Based Community Drug Distribution Point Application (e-CDDP App) which was a twenty-four-month project undertaken in the districts of Kampala, Wakiso, as well as the West Nile district of Arua in Uganda. With the application in place, real-time electronic data has been captured by the healthcare workers and Community Health Workers which led to 3163 clients enrolled using the CDDP application thus 96% of the expected target of 3240.



*Sarah Nambya, a mother of three, says it has been cumbersome for her in the past. "I would spend the entire day waiting for my turn to get medication yet I work two jobs one in the morning and the other in the evening but now it takes a few minutes, today I first reported to work then came here." she narrated.*

## Achievements

- The CDDP program comprising the Application reduced the client waiting time from 30 minutes according to ROM 2017 annual report to less than 15 minutes according to client satisfaction survey of Jan 2020.
- The CDDP comprising the CDDP APP also contributed to ROM clients viral load suppression of 94%. According ROM CDDP Project evaluation, 92% of the respondents had suppressed Viral load.
- Of the two surveys carried out the average of 96% where all satisfied with the CDDP services which involved the use of the application.
- The retention rate among CDDP APP clients was 99.9% due to the continuous follow up of clients hence limited number of clients (35) missing appointments.
- Multiple responses from the qualitative findings demonstrated that CDDP services comprising of the application have increased client ownership and patient driven demand for HIV care and services.
- There was real-time electronic data captured by the healthcare workers and Community Health Workers which led to 3163 clients enrolled using the CDDP application thus 96% of the expected target out of 3240.
- Using the application has reduced manual work of using papers to assess clients and has also continued to maintain client confidentiality.

Though the use of this application has got implications like failure of some clients to turn up for appointments, we were able to see improved coverage and quality of services by decongesting clinics, reducing client waiting time and transport cost by taking services closer to clients.



### 1.1.3 To provide social and economic support to PLWHA and other needy persons infected by HIV and AIDS

#### Orphans and Vulnerable Children-OVC



*Ajiba Natasha Nakato together with her mother, scored 9 aggregates in the 2019 P.L.E examinations and received a scholarship to join St. John Paul College Gulu for Senior One. According to her mother, Ajiba has always been a hardworking daughter. She endeavours to accomplish every task she sets out to do. With her father very sick, Ajiba was able to stay focused and determined in her studies and she hopes to do better and become a doctor in future to treat the sick in her community.*

Through the OVC programme, ROM bases on the fact that children can be victims of HIV/ AIDS directly when affected by HIV/AIDS or indirectly when family members are affected by HIV/AIDS. Currently ROM serves **4,782** OVC in Kampala & Luweero districts. Intensely concentrating on accelerating efforts and narrowing the service gaps to end the AIDS epidemic among children and adolescents, emphasis is also put on addressing key barriers to health care access which affect the most vulnerable and poor like stigma, discrimination and sexual violence. ROM's interventions for active OVC beneficiaries are made based on;

## Health



- All OVC on our programme have a known HIV status.
  - Our OVC suppression rate is **89%**
  - **98** Insecticide Treated Nets were shared with OVC
  - All OVC receive prevention messages on monthly basis.
  - A team of **6** Teenage and Adolescent Support (TAS) staff is readily available to give adherence support.
- 

## School



- Of **1656** OVC in Kampala District, **651** are in school (518 primary level and **133** Secondary level).
  - **25** of them were O'level Candidates
  - **7** of them were A level candidates
  - **96** of them were Primary Level candidates
  - ROM contributes scholastic materials, uniforms annually for all beneficiaries plus menstrual hygiene support.
  - Quarterly school visits are made by social workers to discuss matters of class performance and general student/pupil conduct.
- 

## Safety



- No abuse cases reported and filed with police by ROM.
  - Held quarterly sessions with child protection officer, police and local council leaders.
  - Availability of a well monitored and maintained emergency shelter.
  - ROM has also collaborated with FIDA-U and SAUTI for Legal assistance related to maltreatment and gender-based violence.
- 

## Stability



- ROM has linked **231** to formal financial institutions.
- **31** young mothers and OVC were trained in tailoring, hair dressing and catering.
- ROM has established one model kitchen garden and **7** demonstration gardens with in the community.
- **2** entrepreneurship exhibitions organized by ROM attracting participation of young mothers and caregiver trainees were held. Six groups (four for young mothers and two for care givers) out of twelve groups emerged the best exhibitors.

## Economic Strengthening

### Household Economic strengthening

(HES) comprises a portfolio of interventions to reduce the **economic** vulnerability of families and empower them to provide for the essential needs of the children they care for, rather than relying on external assistance (PEPFAR working definition, 2011)

**Village Saving & Loan Association** is nine years since Care Uganda introduced it in ROM. Three new client groups were trained in 2019. To date, the program has grown as an economic strengthening arm of the OVC section at ROM mobilizing more clients to join saving groups for individual investment for sustainable livelihoods. Since inception, ROM has trained over 60 client groups out of the 446 generally mobilized in the communities.

**446** Village Saving and Loan Associations have been mobilized, trained and formed since 2009.

**237** groups were actively followed in the 2019 financial year

Female have continued to lead in these groups at **94%** while the male stand at **6%**

**13380** members of the general groups, **7110** were reached in the year of 2019

With the support of VSLA, **1685** OVC were supported indirectly (**796** male **47%** and **889** female **53%**)

**61** groups have been linked and Registered at KCCA division

**148 61%** followed up groups have been linked to formal Banks

**629** Households of the client groups are operating small IGAs





## Apprenticeship

ROM has partnered with different Donors such as the Infectious Disease Institute (IDI), and Stephen Lewis Foundation (SLF) to continue empowering Adolescent Girls and Young Women.

2019, ROM reached out to 135 young mothers in the community with sensitization sessions, SRHR messages and general life skills.



*Students of the tailoring class dressed in their works.*



*Students of the catering class 2019 -2020 host Father Anthony Kimbowa Kibira.*

### 1.1.4 Strengthening Management and Support Systems.

#### Strategic Information and Health Systems Strengthening

ROM complies with Ministry of Health Uganda in focusing on the 6 building blocks defined by the World Health Organization: Governance; Health Financing; Service Delivery; Human Resources for Health; Medical Products, Vaccines and Technologies; and Health Information Systems. ROM in 2019 successfully migrated all its ART clients' longitudinal information into the UgandaEMR system. The Center for Disease Control (US) and Monitoring and Evaluation Technical Support (METS) selected ROM as the Path Finder of the UgandaEMR 3.0: Point of Care pilot. Prompt service delivery was enhanced at ROM in 2019 with this system coupled with other innovations such as the Community Drug Distribution Point as Differentiated Service Delivery Model.

## 1.1.5. Improve the Sustainability of ROM

### (I) Finance

#### Income

Income Category (Audited)	2019	2018
Grant Income	4,317,342,269	4,376,279,661
Drug Donation	3,023,195,163	2,144,356,562
Unrestricted Income	347,643,798	918,784,027
	<b>7,688,181,230</b>	<b>7,439,420,250</b>



### ROM fundraising event ■ ■

ROM has for the past 4 years held the charity run, in a bid to raise money to support Orphans and Vulnerable Children attain education.

### Charity run winner of the 5km men's race shares his story



*Emmanuel receives trophy from the guest of honor Eng. Alex Gisagara from National Water and Sewerage Corporation at the charity run 2019.*

Sapiri Max Emmanuel is a student at St. Kizito Secondary School Bugolobi. He resides at Mbuya Zone II. He joined Reach Out in 2017 through the Brass band which had been his passion from childhood.

I spent the early years of my life in Banda where I watched my agemates play the melodious musical instruments. This inspired me to join the Brass band and later encouraged my friend Buyondo Messach to join. Little did we know that this was paving us a way to the ROM school fees sponsorship for both of us. We have since then journeyed together and worked hard to attain good results not to disappoint ROM.

I scored 23 aggregates in the 2019 UCE examinations, I intend to study Physics Economics, Mathematics and ICT at A level. My friend Buyondo Measach scored 26 aggregates and he intends to study Physics Chemistry Mathematics and ICT.

Besides playing the instruments, we have both participated in the ROM Annual Charity runs to support fellow Orphans and Vulnerable Children especially those living with HIV and neglected in the communities. In the 2019 charity run I emerged 1st in the 5KM Men's race. A word of advice to my fellow OVC is to believe in themselves despite the challenges in life and know that we are there for them.

I am grateful to Reach Out family and pray for God's blessing through provision of more donors to support the OVC program.

## Other Projects:

### Grandmothers' Project under Stephen Lewis Foundation

The grandmothers' project is implemented in Kasaala, Luweero district and Kampala and aims to improve the well-being of grandmothers and their households. In 2019 the following was carried out under the project;

**1,501** medical consultations made by grandmothers.

**78** Outreaches conducted.

**103** grandmothers have undergone cervical cancer screening.

**57** beneficiaries received food support.

**78** grandmothers received home based care

**98** grandmothers received solar lanterns

**10** grandmothers received shelter.

**5** pit latrines constructed.

**24** teenage mothers in grannies care received sewing machines.





## Emotional and Psychological Support



*Grandmothers perform a skit at the International Day of The Older Persons in Kasaala-Luwero district.*

### **The Grandmothers' Project Supporting the Youth make changes in their lives:**

#### **Irene's Story**

**N**akazi Irene is a 24 year old young mother from Kyevunze. Before joining the tailoring project, she stayed with her grandmother who was her sole provider after the father to her baby left.

Life has not been easy to the extent of failing to pay medical bills at the time when both me and the baby falls sick, I worked as a house maid for 4 months but things never worked out. Since then I decided to stay with my grandmother, because it was the only option I had. Later, during the visits by the community supporter from ROM, I was referred to the facility for further support from the grandmothers' project. The team carried out assessment and I was recommended for the support because I met the criteria for accessing services, I was trained for 6 months. There after i graduated and received a sewing machine as start up capital, I placed my sewing machine in someone's boutique. On a good day I can earn eight thousand shillings. It is this money I use to support both my child and the grandmother.





*I am grateful for the support from the ROM grandmothers' project, it has made me become the self-sufficient woman I am today.*

## Sustainable Outcomes for Children and Youth (SOCY)

Reach Out Mbuya Parish HIV/IDS Initiative (ROM) is implementing the Sustainable Outcomes for Children and Youth project in Luwero District in the 5 sub- counties of Bamunanika, Butuntumula, Luwero Town council, Kalagala and Kamira. The project is designed to improve the health, nutrition, education and well-being of orphans and vulnerable children impacted by HIV/AIDS, as well as reduce abuse, exploitation and neglect among this population. Determined Resilient Empowered AIDS free Mentored and Safe (DREAMS) core intervention is integrated in the project.

During the annual reporting period, different activities were implemented and key achievements include;

### ***Field Agent Certification***

8 Savings and Internal Lending Communities field agents were assessed through focus group discussions, and 8 Certified as Private Service Providers.

### ***Roll out of Education***

16 Savings and Internal Lending Communities groups adopted edu-fund as a mechanism of catering for the needs of education needs for member children.

## **KEY ACHIEVEMENTS**

### ***Food Bank Rollout***

4 village food, management committees were established.

40kgs of maize were collected and distributed among two destitute households.

### ***Roll out of Fish Farming***

Fish farming was rolled out to Mabye in Kamira S/C. A fish pond was established and stocked with an aim of improving incomes and nutrition of beneficiaries. The fish pond is benefiting 15 active project beneficiaries.



*The S/C Fisheries Officer (with a jerrycan) during one of his technical visits to the fish pond.*

## Defeat Tuberculosis (TB).

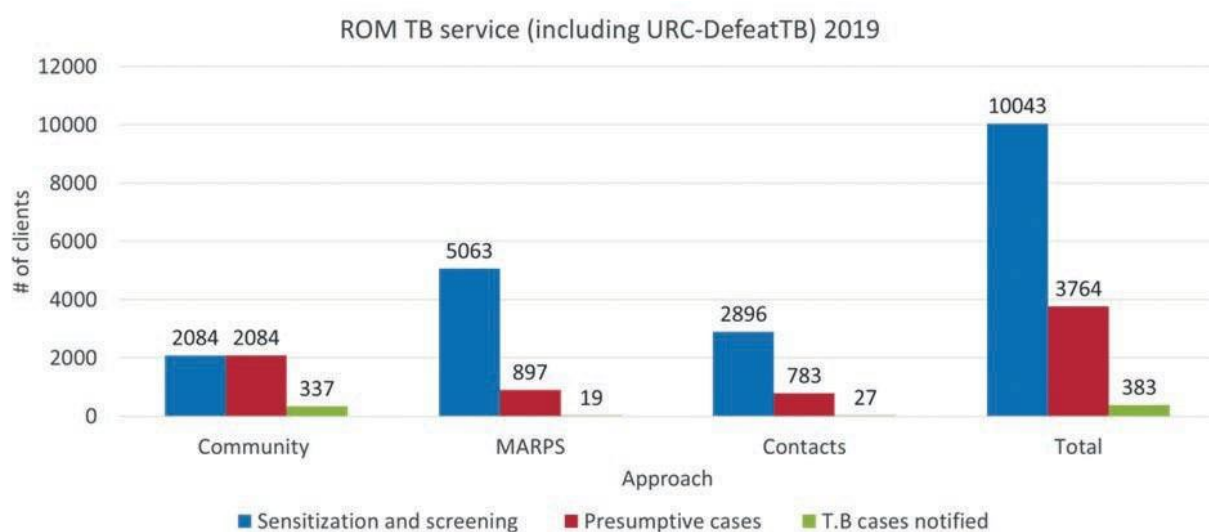


The defeat Tuberculosis (TB) is implemented by ROM with support from University Research Co. LLC (URC). The project focus on case detection to improve treatment outcomes by strengthening the health systems delivering care with the aim of ending the TB epidemic in Uganda.

Under the project ROM identified and linked **352** TB cases. Similarly, **10164** KPs and PPs received massive screening and sensitization.

## Achievements

- ROM conducted trainings for Village Health Teams (VHTs) on how to sensitize and screen for TB in the community.
- ROM utilized media to sensitize the community through radio talk shows.
- In a bid to ensure that clients adhere to treatment, ROM offered adherence counselling to clients.
- Among implementors in Nakawa division, under URC Defeat TB project ROM was the best performer in 2019.









# ROM in the Media



ROM technical staff attend a talk show to share expert views on HIV Discordance.



In partnership with Wakiso District ROM staff attended a talk show at CBS a head of the World AIDS Day 2019.



The ROM Community Support Officer during a talk show about the Orphans and Vulnerable Children on NTV.



## Our Partners



## Reach Out Mbuya Parish HIV/AIDS Initiative

P.O. BOX 7303 Kampala Uganda | Plot 1 Boazman Road Mbuya 11 Hill.  
Tel: +256 414 222630/+256 312 165250  
Email: reachout@reachoutmbuyaya.org | Web: www.reachoutmbuyaya.org